

CALGA SAND QUARRY
ATTENDED COMPLIANCE NOISE MONITORING
19 OCTOBER 2011

REPORT NO. 01127-E
VERSION A

OCTOBER 2011

PREPARED FOR

ROCLA PTY LTD
72 ORCHARDLEIGH STREET
GUILDFORD NSW 2161

DOCUMENT CONTROL

Version	Status	Date	Prepared By	Reviewed By
A	Final	11 November 2011	Roman Haverkamp	John Wassermann

Note

All materials specified by Wilkinson Murray Pty Limited have been selected solely on the basis of acoustic performance. Any other properties of these materials, such as fire rating, chemical properties etc. should be checked with the suppliers or other specialised bodies for fitness for a given purpose. The information contained in this document produced by Wilkinson Murray is solely for the use of the client identified on the front page of this report. Our client becomes the owner of this document upon full payment of our **Tax Invoice** for its provision. This document must not be used for any purposes other than those of the document's owner. Wilkinson Murray undertakes no duty to or accepts any responsibility to any third party who may rely upon this document.

Quality Assurance

We are committed to and have implemented AS/NZS ISO 9001:2008 "Quality Management Systems – Requirements". This management system has been externally certified and Licence No. QEC 13457 has been issued.



AAAC

This firm is a member firm of the Association of Australian Acoustical Consultants and the work here reported has been carried out in accordance with the terms of that membership.



TABLE OF CONTENTS

	Page
GLOSSARY OF ACOUSTIC TERMS	
1 INTRODUCTION	1
2 ATTENDED NOISE MONITORING	1
3 OPERATIONAL NOISE CRITERIA	3
3.1 Background Noise Levels	Error! Bookmark not defined.
4 ASSESSMENT OF NOISE LEVELS	4
5 CONCLUSION	6

GLOSSARY OF ACOUSTIC TERMS

Most environments are affected by environmental noise which continuously varies, largely as a result of road traffic. To describe the overall noise environment, a number of noise descriptors have been developed and these involve statistical and other analysis of the varying noise over sampling periods, typically taken as 15 minutes. These descriptors, which are demonstrated in the graph below, are here defined.

Maximum Noise Level (L_{Amax}) – The maximum noise level over a sample period is the maximum level, measured on fast response, during the sample period.

L_{A1} – The L_{A1} level is the noise level which is exceeded for 1% of the sample period. During the sample period, the noise level is below the L_{A1} level for 99% of the time.

L_{A10} – The L_{A10} level is the noise level which is exceeded for 10% of the sample period. During the sample period, the noise level is below the L_{A10} level for 90% of the time. The L_{A10} is a common noise descriptor for environmental noise and road traffic noise.

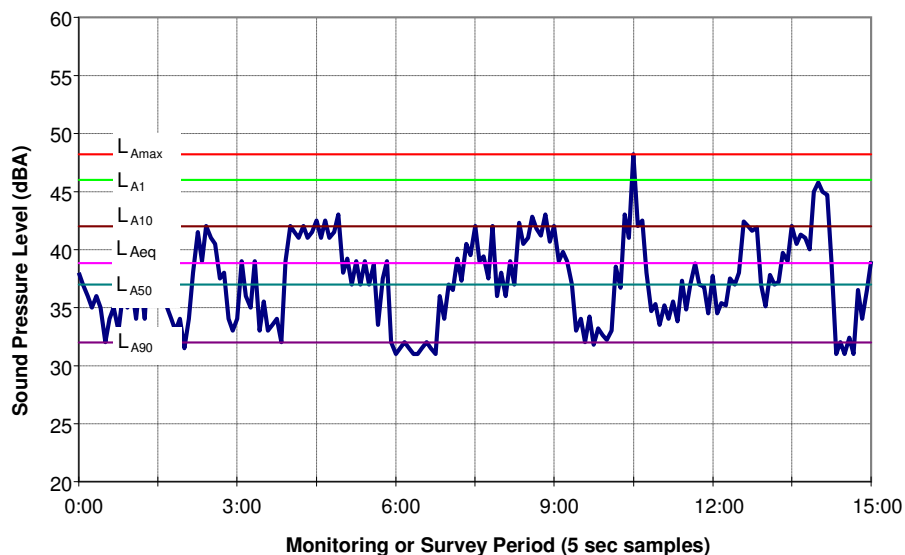
L_{A90} – The L_{A90} level is the noise level which is exceeded for 90% of the sample period. During the sample period, the noise level is below the L_{A90} level for 10% of the time. This measure is commonly referred to as the background noise level.

L_{Aeq} – The equivalent continuous sound level (L_{Aeq}) is the energy average of the varying noise over the sample period and is equivalent to the level of a constant noise which contains the same energy as the varying noise environment. This measure is also a common measure of environmental noise and road traffic noise.

ABL – The Assessment Background Level is the single figure background level representing each assessment period (daytime, evening and night time) for each day. It is determined by calculating the 10th percentile (lowest 10th percent) background level (L_{A90}) for each period.

RBL – The Rating Background Level for each period is the median value of the ABL values for the period over all of the days measured. There is therefore an RBL value for each period – daytime, evening and night time.

Typical Graph of Sound Pressure Level vs Time



1 INTRODUCTION

This report summarises the results of the quarterly attended noise monitoring conducted on the 19 October 2011 and carried out in accordance with Condition 3(7) of Development Consent DA 94-4-2004.

The Noise Monitoring Program (NMP) prepared by R.W. Corkery & Co. Pty. Ltd summarises all relevant criteria, monitoring locations, and frequency / timing of monitoring.

2 ATTENDED NOISE MONITORING

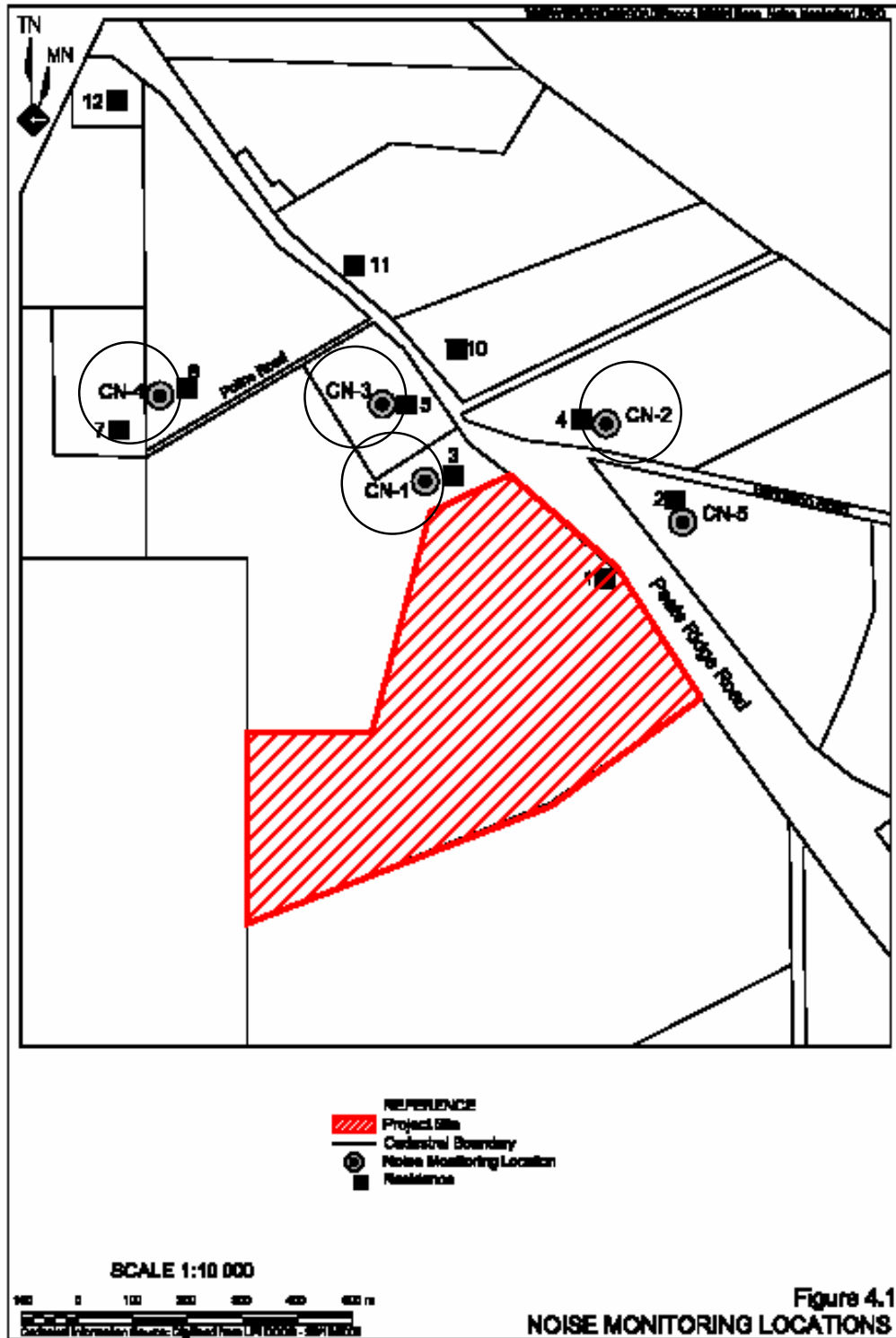
Attended noise monitoring was conducted in the afternoon of Wednesday, 19 October 2011. Measurements were made at each of the following locations (shown in Figure 2-1):

- CN-1 Gazzana Residence;
- CN-2 King Residence;
- CN-3 Kashouli Residence; and
- CN-4 Townsend Residence.

Noise levels were measured with a Bruel & Kjaer Type 2236 sound level meter. This sound level meter conforms to Australian Standard 1259 "Acoustics – Sound Level Meters" as Type 1 precision sound level meter which has an accuracy suitable for laboratory use. The A-Weighting filter of the meter was selected and the time weighting was set to 'fast'. The meter was field calibrated both before and after the measurements with a Bruel & Kjaer Sound Level Calibrator Type 4230. No significant drift in the sound level meter calibration level was recorded.

The B&K 2236 sound level meter and the B&K 4230 calibrator have been laboratory calibrated within the previous two years in accordance with Wilkinson Murray Quality Assurance procedures.

Figure 2-1 Noise Monitoring Locations



3 OPERATIONAL NOISE CRITERIA

The NMP presents noise criteria for the operation of plant or equipment on the premises as required by the Office of Environment and Heritage (OEH) licence. It states that noise levels emanating from the premises must not exceed the relevant criteria when measured within 30m of the residences or noise sensitive areas.

Daytime operational noise is assessed as an $L_{Aeq,15min}$ noise level. The L_{Aeq} level is the Equivalent Continuous Sound Level and represents the level of a continuous sound with the same average sound energy over the sampling period as the actual noise environment with its fluctuating sound levels.

Table 3-1 summarises the daytime noise criteria.

Table 3-1 Operational Daytime Noise Criteria

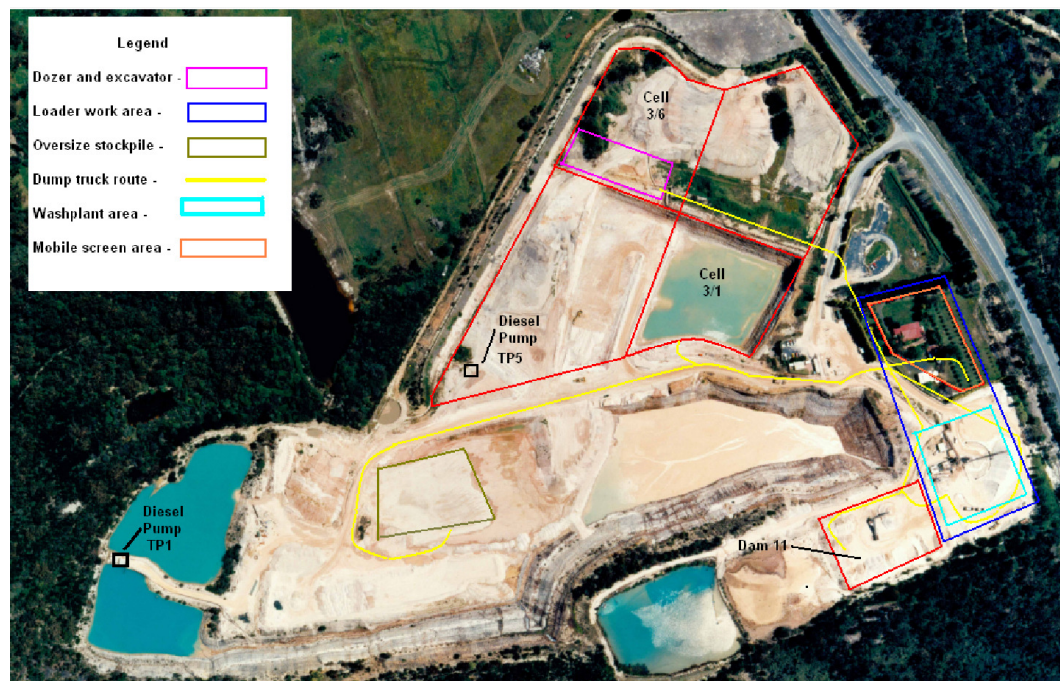
Location	Daytime Criteria $L_{Aeq,15min}$ (dBA)
CN-1	41
CN-2	40
CN-3	39
CN-4	35

4 ASSESSMENT OF NOISE LEVELS

Based on site observations, weather conditions were appropriate for conducting environmental noise measurements during the day of survey. This was confirmed by meteorological data obtained from the site's weather station.

Figure 4-1 presents an aerial of the quarry site.

Figure 4-1 Locality Aerial



The following mobile plant and equipment were in operation during the time of the survey:

- Dozer ripping and pushing sandstone in Cell 3/6;
- Excavator loading dump truck with raw feed from 3/6 to go to washplant and brickies raw feed stockpile;
- Dump truck taking raw feed from 3/6 to go to washplant and brickies raw feed stockpile;
- Front-end-loader producing brickies sand, loading sales trucks and loading dump trucks with oversize to be taken to oversize stockpile;
- Front-end-loader feeding washplant from surge pile, loading oversize from washplant onto dump truck and loading sales trucks;
- Water truck was in operation to suppress dust on designated haul roads;
- Transfer pump 5 was in constant operation;
- Washplant and dry screening plant were in full production;
- Contractor 45t excavator loading two 40t dump trucks with consolidated silt from Dam 11;
- Two 40t contractor dump trucks hauling consolidated silt from Dam 11 to Cell 3/1; and
- Contractor D6 dozer pushing consolidated silt into Cell 3/1.

Table 4-1 summarises the measurement results and compares them against the relevant

daytime noise criteria.

Table 4-1 Attended Noise Measurement Results (Wednesday, 19 October 2011)

Location	Time	$L_{Aeq,15min}$ due to Quarry Operations (dBA)	Daytime Criteria $L_{Aeq,15min}$ (dBA)	Comments
CN-1	2.31pm	41	41	Engine noise from quarry ranging 39-42dBA was audible most of the time.
	2.46pm			Typical and heavy traffic on Peats Ridge Road measured with L_{Amax} 59-60dBA and L_{Amax} 65-71dBA respectively. Insects and birds constantly audible.
CN-2	3.33pm	36	40	Engine noise from the quarry ranging 34-37dBA was audible most of the time with an isolated peak of 46dBA.
	3.48pm			Typical and heavy traffic on Peats Ridge Road measured with L_{Amax} 47-51dBA and L_{Amax} 58-60dBA respectively. Aeroplane audible once with L_{Amax} 54dBA. Birds nearby constantly audible with L_{Amax} 47-52dBA.
CN-3	2.49pm	35	39	Engine noise from the quarry was audible during lulls in traffic and estimated at 34-35dBA with an isolated peak of 40dBA. Distant reversing alarm from quarry just audible at times but not measurable.
	3.04pm			Typical and heavy traffic on Peats Ridge Road measured with L_{Amax} 51-54dBA and L_{Amax} 56-58dBA respectively. Birds nearby constantly audible with L_{Amax} 58-68dBA.
CN-4	3.08pm	33	35	Engine noise from the quarry was audible during lulls in traffic and estimated between 30-34dBA. Distant reversing alarm from quarry just audible at times but not measurable.
	3.23pm			Typical and heavy traffic on Peats Ridge Road measured with L_{Amax} 42-44dBA and L_{Amax} 50-58dBA respectively. Helicopters audible twice with L_{Amax} 52-60dBA. Birds nearby constantly audible with L_{Amax} 46-55dBA.

Table 4-1 shows that measured $L_{Aeq,15min}$ noise levels due to quarry operations comply with the relevant daytime noise criteria at all the four receivers.

5 CONCLUSION

Attended compliance noise monitoring was conducted on the 19 October 2011. The results of the survey indicated that noise emissions from the Calga Sand Quarry plant were within the limits set in the Noise Monitoring Program at all four identified receivers.